

# Product parameters

## Type specification — SC PTCA ( LEETY™ )

Catheter length (cm)	Balloon diameter (mm)	Balloon length(mm)										Guide wire compatibility (Inch)
		5	8	10	12	15	17	20	26	30		
140	1.00	PN10005	PN10008	PN10010	PN10012	PN10015	PN10017	PN10020	PN10026	PN10030		0.014
	1.25	PN12505	PN12508	PN12510	PN12512	PN12515	PN12517	PN12520	PN12526	PN12530		
	1.50	PN15005	PN15008	PN15010	PN15012	PN15015	PN15017	PN15020	PN15026	PN15030		
	1.75	PN17505	PN17508	PN17510	PN17512	PN17515	PN17517	PN17520	PN17526	PN17530		
	2.00	PN20005	PN20008	PN20010	PN20012	PN20015	PN20017	PN20020	PN20026	PN20030		
	2.25	PN22505	PN22508	PN22510	PN22512	PN22515	PN22517	PN22520	PN22526	PN22530		
	2.50	PN25005	PN25008	PN25010	PN25012	PN25015	PN25017	PN25020	PN25026	PN25030		
	2.70	PN27505	PN27508	PN27510	PN27512	PN27515	PN27517	PN27520	PN27526	PN27530		
	3.00	PN30005	PN30008	PN30010	PN30012	PN30015	PN30017	PN30020	PN30026	PN30030		
	3.25	PN32505	PN32508	PN32510	PN32512	PN32515	PN32517	PN32520	PN32526	PN32530		
	3.50	PN35005	PN35008	PN35010	PN35012	PN35015	PN35017	PN35020	PN35026	PN35030		
	4.00	PN40005	PN40008	PN40010	PN40012	PN40015	PN40017	PN40020	PN40026	PN40030		

Balloon diameter: 1.00mm-4.00mm Balloon length: 5mm-30mm

## Type specification — NC PTCA ( Ultra LEETY™ )

Catheter length (cm)	Balloon diameter (mm)	Balloon length(mm)					Guide wire compatibility (Inch)
		8	10	12	15	18	
140	2.00	PG20008	PG20010	PG20012	PG20015	PG20018	0.014
	2.25	PG22508	PG22510	PG22512	PG22515	PG22518	
	2.50	PG25008	PG25010	PG25012	PG25015	PG25018	
	2.75	PG27508	PG27510	PG27512	PG27515	PG27518	
	3.00	PG30008	PG30010	PG30012	PG30015	PG30018	
	3.25	PG32508	PG32510	PG32512	PG32515	PG32518	
	3.50	PG35008	PG35010	PG35012	PG35015	PG35018	
	3.75	PG37508	PG37510	PG37512	PG37515	PG37518	
	4.00	PG40008	PG40008	PG40012	PG40015	PG40018	
	4.50	PG45008	PG45008	PG45012	PG45015	PG45018	

Balloon diameter: 2.00mm-4.50mm Balloon length: 8mm-18mm

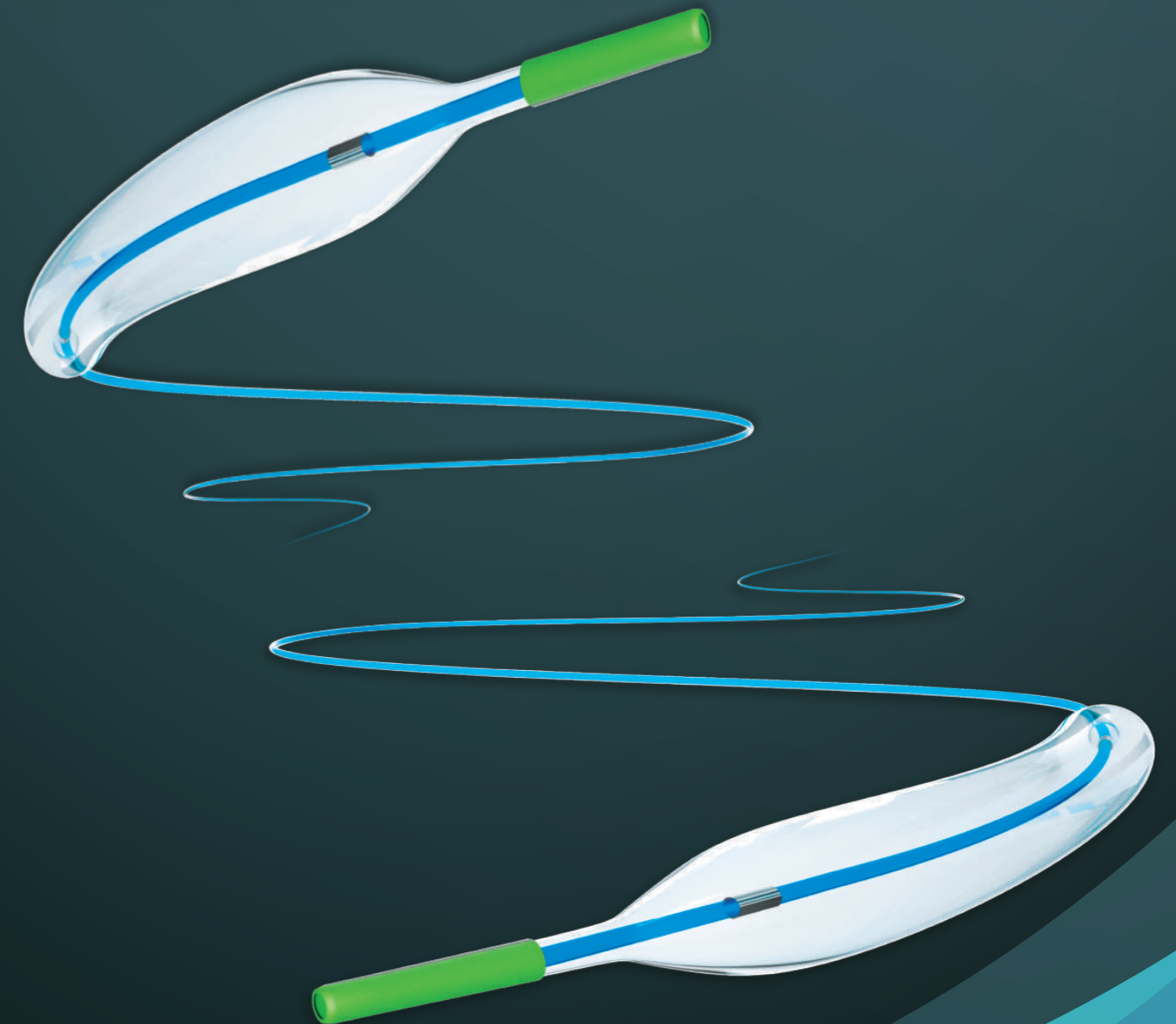
## Table Balloon Compliance

Pressure (atm)	Pressure (kPa)	Balloon diameter (unit: mm)									
		2.00	2.25	2.50	2.75	3.00	3.25	3.50	3.75	4.00	4.50
6	608.0	1.94	2.18	2.42	2.65	2.89	3.14	3.38	3.61	3.85	4.35
8	810.6	1.96	2.20	2.44	2.69	2.93	3.17	3.42	3.66	3.90	4.40
10	1013.3	1.98	2.23	2.47	2.72	2.96	3.21	3.46	3.70	3.95	4.45
12	1215.9	2.00	2.25	2.50	2.75	3.00	3.25	3.50	3.75	4.00	4.50
14	1418.6	2.02	2.27	2.53	2.78	3.04	3.29	3.54	3.80	4.05	4.55
16	1621.2	2.04	2.30	2.56	2.81	3.07	3.33	3.58	3.84	4.10	4.60
18	1823.9	2.06	2.32	2.58	2.85	3.11	3.36	3.62	3.89	4.15	4.65
20	2026.5	2.08	2.35	2.61	2.88	3.14	3.40	3.66	3.93	4.20	4.70
22	2229.2	2.10	2.37	2.64	2.91	3.18	3.44	3.70	3.98	4.25	4.76
24	2431.8	2.12	2.39	2.67	2.94	3.22	3.48	3.74	4.03	4.30	4.81
26	2634.5	2.14	2.42	2.70	2.97	3.25	3.52	3.78	4.07	4.35	4.87

Pressure (atm)	Pressure (kPa)	Balloon diameter (unit: mm)													
		1.00	1.25	1.50	1.75	2.00	2.25	2.50	2.75	3.00	3.25	3.50	4.00		
2	202.7	0.91	1.16	1.40	1.66	1.87	2.11	2.36	2.59	2.82	3.06	3.29	3.77		
4	405.3	0.96	1.20	1.45	1.70	1.94	2.18	2.43	2.67	2.91	3.16	3.39	3.89		
6 (NP)	608.0	1.00	1.25	1.50	1.75	2.00	2.25	2.50	2.75	3.00	3.25	3.50	4.00		
8	810.6	1.04	1.30	1.55	1.80	2.06	2.32	2.57	2.83	3.09	3.34	3.61	4.10		
10	1013.3	1.09	1.34	1.60	1.84	2.13	2.39	2.64	2.91	3.18	3.44	3.71	4.23		
12	1215.9	1.13	1.39	1.66	1.89	2.19	2.45	2.71	2.98	3.27	3.53	3.82	4.34		
14 (RBP)	1418.6	1.17	1.44	1.71	1.94	2.25	2.52	2.78	3.06	3.36	3.62	3.92	4.45		
16	1621.2	1.22	1.48	1.76	1.98	2.32	2.59	2.85	3.14	3.45	3.72	4.03	4.57		
18	1823.9	1.26	1.53	1.81	2.03	2.38	2.66	2.92	3.22	3.54	3.81	4.14	4.68		

# LEETY™

## SC PTCA Balloon Catheter



## Zhejiang Barty Medical Technology Co.,Ltd.

Add : Building 1-2, No.20-2 Street, Economic & Technological Development Area, Hangzhou, China  
 Tel : +86-571-88373719  
 Fax : +86-571-88373716  
 Web: www.vascularbarty.com www.bartymedical.com  
 Email: info@bartymedical.com

## Distributor in Czech Republic:

Endolab vascular s.r.o.  
 Add: Sokolovská, 428/130, Praha 8 - Karlín, 186 00, Czech Republic  
 Tel: +420 722 501 700, +420 723 833 454  
 Web: www.endolaba.com  
 Email: endolaba@gmail.com

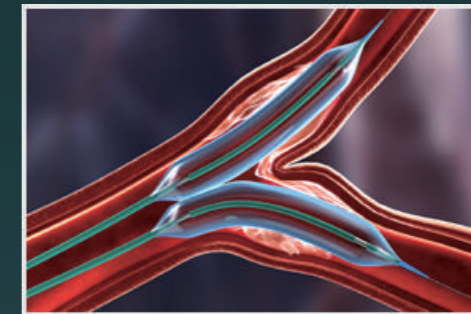
# LEETY™

## SC PTCA Balloon Catheter

### Tip structure

- With smooth taper tip
- Lifting conveyer through tortuous vascular capacity
- Reduce the vascular stimulation

+ Can be used for abutment balloon technique



+ Advanced laser welding technology to realize seamless connection between head and tube

### Three layer inner tube

- Reduce the wire pushing resistance, provide support and pressure

### International new material manufacturing

- Pebax® semi-compliance balloon materials

BSL-Hydrophilic  
Balloon and Distal shaft

### Hydrophilic coating

- Excellent hydrophilic coating technology, Super slip push
- Reduce intraoperative delivery resistance
- The delivery system is easy to reach the distal lesions

## Application

The product is intended for Percutaneous transluminal coronary angioplasty (PTCA) for coronary artery stenosis or occlusion.

### Fast switching type conveying system

- Easy operation, reduce operation time, reduce operation risk
- Fast switching section of 25cm
- Compatible 0.014 inch micro guide wire