

## Product Specifications

Technical Specification													
Catheter Design		Double Lumen (OTW)											
Catheter Diameter		3.4F - 3.9F (1.10mm-1.31mm)											
Balloon Coating		BSL Hydrophilic											
Balloon Marker		2 swaged (zero profile)											
Nominal Pressure		10 atm (1013.3Kpa)											
Compliance		Non-compliance											
Recommend Guidewire		0.018"											
Catheter Length 90cm	Catheter Length 130cm	Catheter Length 180cm	Balloon Diameter (mm)	Balloon Length (mm)	RBP (atm/Kpa)	Recm Introducer Sheath(F)	Catheter Length 90cm	Catheter Length 130cm	Catheter Length 180cm	Balloon Diameter (mm)	Balloon Length (mm)	RBP (atm/Kpa)	Recm Introducer Sheath(F)
G090020002018D	G130020002018D	—	2.0	20	22 (2229.2)	4	G090040002018D	G130040002018D	—	4.0	20	22 (2229.2)	4
G090020004018D	G130020004018D	G180020004018D	2.0	40	22 (2229.2)	4	G090040004018D	G130040004018D	G180040004018D	4.0	40	22 (2229.2)	4
G090020006018D	G130020006018D	G180020006018D	2.0	60	22 (2229.2)	4	G090040006018D	G130040006018D	G180040006018D	4.0	60	22 (2229.2)	4
G090020008018D	G130020008018D	G180020008018D	2.0	80	22 (2229.2)	4	G090040008018D	G130040008018D	G180040008018D	4.0	80	22 (2229.2)	4
G090020010018D	G130020010018D	G180020010018D	2.0	100	20 (2026.5)	4	G090040010018D	G130040010018D	G180040010018D	4.0	100	20 (2026.5)	4
G090020012018D	G130020012018D	G180020012018D	2.0	120	20 (2026.5)	4	G090040012018D	G130040012018D	G180040012018D	4.0	120	20 (2026.5)	4
G090020015018D	G130020015018D	G180020015018D	2.0	150	20 (2026.5)	4	G090040015018D	G130040015018D	G180040015018D	4.0	150	20 (2026.5)	4
G090020020018D	G130020020018D	—	2.0	200	20 (2026.5)	5	G090040020018D	G130040020018D	—	4.0	200	20 (2026.5)	5
G090020022018D	G130020022018D	—	2.0	220	20 (2026.5)	5	G090040022018D	G130040022018D	—	4.0	220	20 (2026.5)	5
G090025002018D	G130025002018D	—	2.5	20	22 (2229.2)	4	G090050002018D	G130050002018D	—	5.0	20	22 (2229.2)	4
G090025004018D	G130025004018D	G180025004018D	2.5	40	22 (2229.2)	4	G090050004018D	G130050004018D	G180050004018D	5.0	40	22 (2229.2)	4
G090025006018D	G130025006018D	G180025006018D	2.5	60	22 (2229.2)	4	G090050006018D	G130050006018D	G180050006018D	5.0	60	22 (2229.2)	4
G090025008018D	G130025008018D	G180025008018D	2.5	80	22 (2229.2)	4	G090050008018D	G130050008018D	G180050008018D	5.0	80	22 (2229.2)	4
G090025010018D	G130025010018D	G180025010018D	2.5	100	20 (2026.5)	4	G090050010018D	G130050010018D	G180050010018D	5.0	100	18 (1823.9)	4
G090025012018D	G130025012018D	G180025012018D	2.5	120	20 (2026.5)	4	G090050012018D	G130050012018D	G180050012018D	5.0	120	18 (1823.9)	4
G090025015018D	G130025015018D	G180025015018D	2.5	150	20 (2026.5)	4	G090050015018D	G130050015018D	G180050015018D	5.0	150	18 (1823.9)	4
G090025020018D	G130025020018D	—	2.5	200	20 (2026.5)	5	G090050020018D	G130050020018D	—	5.0	200	18 (1823.9)	5
G090025022018D	G130025022018D	—	2.5	220	20 (2026.5)	5	G090050022018D	G130050022018D	—	5.0	220	18 (1823.9)	5
G090030002018D	G130030002018D	—	3.0	20	22 (2229.2)	4	G090060002018D	G130060002018D	—	6.0	20	20 (2026.5)	5
G090030004018D	G130030004018D	G180030004018D	3.0	40	22 (2229.2)	4	G090060004018D	G130060004018D	G180060004018D	6.0	40	20 (2026.5)	5
G090030006018D	G130030006018D	G180030006018D	3.0	60	22 (2229.2)	4	G090060006018D	G130060006018D	G180060006018D	6.0	60	20 (2026.5)	5
G090030008018D	G130030008018D	G180030008018D	3.0	80	22 (2229.2)	4	G090060008018D	G130060008018D	G180060008018D	6.0	80	20 (2026.5)	5
G090030010018D	G130030010018D	G180030010018D	3.0	100	20 (2026.5)	4	G090060010018D	G130060010018D	G180060010018D	6.0	100	18 (1823.9)	5
G090030012018D	G130030012018D	G180030012018D	3.0	120	20 (2026.5)	4	G090060012018D	G130060012018D	G180060012018D	6.0	120	18 (1823.9)	5
G090030015018D	G130030015018D	G180030015018D	3.0	150	20 (2026.5)	4	G090060015018D	G130060015018D	—	6.0	150	18 (1823.9)	5
G090030020018D	G130030020018D	—	3.0	200	20 (2026.5)	5	G090060020018D	G130060020018D	—	6.0	200	18 (1823.9)	5
G090030022018D	G130030022018D	—	3.0	220	20 (2026.5)	5	G090060022018D	G130060022018D	—	6.0	220	18 (1823.9)	5
G090035002018D	G130035002018D	—	3.5	20	22 (2229.2)	4	G090070002018D	G130070002018D	—	7.0	20	18 (1823.9)	5
G090035004018D	G130035004018D	G180035004018D	3.5	40	22 (2229.2)	4	G090070004018D	G130070004018D	G180070004018D	7.0	40	18 (1823.9)	5
G090035006018D	G130035006018D	G180035006018D	3.5	60	22 (2229.2)	4	G090070006018D	G130070006018D	G180070006018D	7.0	60	18 (1823.9)	5
G090035008018D	G130035008018D	G180035008018D	3.5	80	22 (2229.2)	4	G090070008018D	G130070008018D	G180070008018D	7.0	80	18 (1823.9)	5
G090035010018D	G130035010018D	G180035010018D	3.5	100	20 (2026.5)	4	G090070010018D	G130070010018D	G180070010018D	7.0	100	16 (1621.2)	5
G090035012018D	G130035012018D	G180035012018D	3.5	120	20 (2026.5)	4	G090070012018D	G130070012018D	G180070012018D	7.0	120	16 (1621.2)	5
G090035015018D	G130035015018D	G180035015018D	3.5	150	20 (2026.5)	4	G090070015018D	G130070015018D	—	7.0	150	16 (1621.2)	5
G090035020018D	G130035020018D	—	3.5	200	20 (2026.5)	5	G090070020018D	G130070020018D	—	7.0	200	16 (1621.2)	6
G090035022018D	G130035022018D	—	3.5	220	20 (2026.5)	5	G090070022018D	G130070022018D	—	7.0	220	16 (1621.2)	6

## Product Specifications

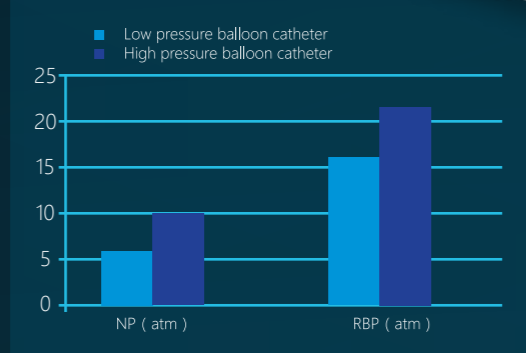
Technical Specification													
Catheter Design		Double Lumen (OTW)											
Catheter Diameter		4.9F - 5.1F (1.14mm-1.24mm)											
Balloon Coating		BSL Hydrophilic											
Balloon Marker		2 swaged (zero profile)											
Nominal Pressure		10 atm (1013.3Kpa)											
Compliance		Non-compliance											
Recommend Guidewire		"0.035"											
Catheter Length 40cm	Catheter Length 80cm	Catheter Length 130cm	Balloon Diameter (mm)	Balloon Length (mm)	RBP (atm/Kpa)	Recm Introducer Sheath(F)	Catheter Length 40cm	Catheter Length 80cm	Catheter Length 130cm	Balloon Diameter (mm)	Balloon Length (mm)	RBP (atm/Kpa)	Recm Introducer Sheath(F)
G040030002035D	G080030002035D	G130030002035D	3.0	20	22 (2229.2)	5	G040060004035D	G080060004035D	G130060004035D	6.0	40	20 (2026.5)	5
G040030004035D	G080030004035D	G130030004035D	3.0	40	22 (2229.2)	5	G040060006035D	G080060006035D	G130060006035D	6.0	60	20 (2026.5)	5
G040030006035D	G080030006035D	G130030006035D	3.0	60	22 (2229.2)	5	G040060008035D	G080060008035D	G130060008035D	6.0	80	18 (1823.9)	5
G040030008035D	G080030008035D	G130030008035D	3.0	80	20 (2026.5)	5	G040060010035D	G080060010035D	G130060010035D	6.0	100	18 (1823.9)	5
G040030010035D	G080030010035D	G130030010035D	3.0	100	20 (2026.5)	5	G040060012035D	G080060012035D	G130060012035D	6.0	120	18 (1823.9)	5
—	G080030012035D	G130030012035D	3.0	120	20 (2026.5)	5	—	G080060015035D	G130060015035D	6.0	150	18 (1823.9)	5
—	G080030015035D	G130030015035D	3.0	150	20 (2026.5)	5	—	G080060020035D	G130060020035D	6.0	200	18 (1823.9)	6
—	G080030020035D	G130030020035D	3.0	200	20 (2026.5)	6	—	G080060022035D	G130060022035D	6.0	220	18 (1823.9)	6
—	G080030022035D	G130030022035D	3.0	220	20 (2026.5)	6	G040070002035D	G080070002035D	G130070002035D	7.0	20	18 (1823.9)	6
G040035002035D	G080035002035D	G130035002035D	3.5	20	22 (2229.2)	5	G040070004035D	G080070004035D	G130070004035D	7.0	40	18 (1823.9)	6
G040035004035D	G080035004035D	G130035004035D	3.5	40	22 (2229.2)	5	G040070006035D	G080070006035D	G130070006035D	7.0	60	18 (1823.9)	6
G040035006035D	G080035006035D	G130035006035D	3.5	60	22 (2229.2)	5	G040070008035D	G080070008035D	G130070008035D	7.0	80	16 (1621.2)	6
G040035008035D	G080035008035D	G130035008035D	3.5	80	20 (2026.5)	5	G040070010035D	G080070010035D	G130070010035D	7.0	100	16 (1621.2)	6
G040035010035D	G080035010035D	G130035010035D	3.5	100	20 (2026.5)	5	—	G080070012035D	G130070012035D	7.0	120	16 (1621.2)	6
—	G080035012035D	G130035012035D	3.5	120	20 (2026.5)	5	—	G080070015035D	G130070015035D	7.0	150	16 (1621.2)	6
—	G080035015035D	G130035015035D	3.5	150	20 (2026.5)	5	—	G080070020035D	G130070020035D	7.0	200	16 (1621.2)	6
—	G080035020035D	G130035020035D	3.5	200	20 (2026.5)	6	—	G080070022035D	G130070022035D	7.0	220	16 (1621.2)	6
—	G080035022035D	G130035022035D	3.5	220	20 (2026.5)	6	G040080002035D	G080080002035D	G130080002035D	8.0	20	18 (1823.9)	6
G040040002035D	G080040002035D	G130040002035D	4.0	20	22 (2229.2)	5	G040080004035D	G080080004035D	G130080004035D	8.0	40	18 (1823.9)	6
G040040004035D	G080040004035D	G130040004035D	4.0	40	22 (2229.2)	5	G040080006035D	G080080006035D	G130080006035D	8.0	60	18 (1823.9)	6
G040040006035D	G080040006035D	G130040006035D	4.0	60	22 (2229.2)	5	G040080008035D	G080080008035D	G130080008035D	8.0	80	16 (1621.2)	6
G040040008035D	G080040008035D	G130040008035D	4.0	80	20 (2026.5)	5	G040080010035D	G080080010035D	G130080010035D	8.0	100	16 (1621.2)	6
G040040010035D	G080040010035D	G130040010035D	4.0	100	20 (2026.5)	5	—	G080080012035D	G130080012035D	8.0	120	16 (1621.2)	6
—	G080040012035D	G130040012035D	4.0	120	20 (2026.5)	5	—	G080080015035D	G130080015035D	8.0	150	16 (1621.2)	6
—	G080040015035D	G130040015035D	4.0	150	20 (2026.5)	5	—	G080080020035D	G130080020035D	8.0	200	16 (1621.2)	7
—	G080040020035D	G130040020035D	4.0	200	20 (2026.5)	6	G040090002035D	G080090002035D	G130090002035D	9.0	20	14 (1418.6)	7
—	G080040022035D	G130040022035D	4.0	220	20 (2026.5)	6	G040090004035D	G080090004035D	G130090004035D	9.0	40	14 (1418.6)	7
G040050002035D	G080050002035D	G130050002035D	5.0	20	20 (2026.5)	5	G040090006035D	G080090006035D	G130090006035D	9.0	60	14 (1418.6)	7
G040050004035D	G080050004035D	G130050004035D	5.0										

# Ultra WANTY™

## NCPTA Balloon Catheter

### Structure Design

Optimized to high strength pressure resistance, reducing deformation, having both softness and propelling.

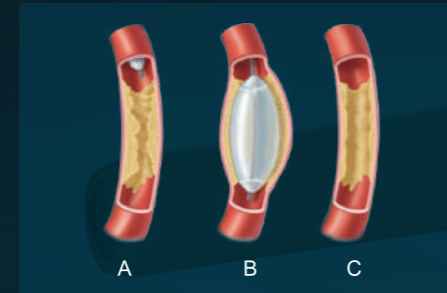


Nominal pressure reaches 10atm, rated burst pressure Top22atm, low compliance.

### High Pressure Balloon

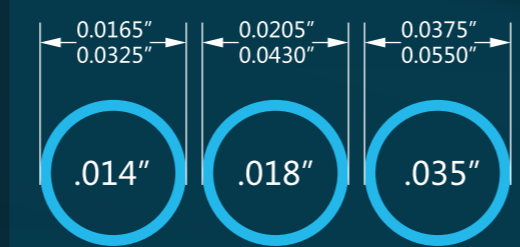
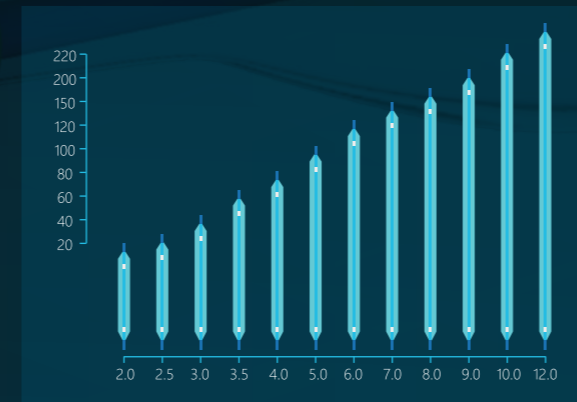
### High Pressure Dilatation

Low compliance, high strength  
Effectively solve the resistance of calcification.



### Multi-specifications

Heritage PTA balloon catheter design, being improved to high strength pressure resistance, with multi-specifications.



Tip and folded balloon maintain a relatively low profile to get through and reduce damage to blood vessel.

### Low Profile

## Product Specifications

Technical Specification					
Catheter Design	Coaxial (OTW)				
Catheter Diameter	2.7F - 3.2F (0.87mm-1.08mm)				
Balloon Coating	BSL Hydrophilic				
Balloon Marker	2 swaged (zero profile)				
Nominal Pressure	10 atm (1013.3Kpa)				
Compliance	Non-compliance				
Recommend Guidewire	0.014"				
Catheter Length 100cm	Catheter Length 150cm	Balloon Diameter(mm)	Balloon Length(mm)	RBP(atm/Kpa)	Recom Introducer Sheath(F)
G100020002014	G150020002014	2.0	20	22 (2229.2)	4
G100020004014	G150020004014	2.0	40	22 (2229.2)	4
G100020006014	G150020006014	2.0	60	22 (2229.2)	4
G100020008014	G150020008014	2.0	80	22 (2229.2)	4
G100020010014	G150020010014	2.0	100	20 (2026.5)	4
G100020012014	G150020012014	2.0	120	20 (2026.5)	4
G100020015014	G150020015014	2.0	150	20 (2026.5)	4
G100020020014	G150020020014	2.0	200	20 (2026.5)	4
G100020022014	G150020022014	2.0	220	20 (2026.5)	4
G100025002014	G150025002014	2.5	20	22 (2229.2)	4
G100025004014	G150025004014	2.5	40	22 (2229.2)	4
G100025006014	G150025006014	2.5	60	22 (2229.2)	4
G100025008014	G150025008014	2.5	80	22 (2229.2)	4
G100025010014	G150025010014	2.5	100	20 (2026.5)	4
G100025012014	G150025012014	2.5	120	20 (2026.5)	4
G100025015014	G150025015014	2.5	150	20 (2026.5)	4
G100025020014	G150025020014	2.5	200	20 (2026.5)	4
G100025022014	G150025022014	2.5	220	20 (2026.5)	4
G100030002014	G150030002014	3.0	20	22 (2229.2)	4
G100030004014	G150030004014	3.0	40	22 (2229.2)	4
G100030006014	G150030006014	3.0	60	22 (2229.2)	4
G100030008014	G150030008014	3.0	80	22 (2229.2)	4
G100030010014	G150030010014	3.0	100	20 (2026.5)	4
G100030012014	G150030012014	3.0	120	20 (2026.5)	4
G100030015014	G150030015014	3.0	150	20 (2026.5)	4
G100030020014	G150030020014	3.0	200	20 (2026.5)	4
G100030022014	G150030022014	3.0	220	20 (2026.5)	4
G100035002014	G150035002014	3.5	20	22 (2229.2)	4
G100035004014	G150035004014	3.5	40	22 (2229.2)	4
G100035006014	G150035006014	3.5	60	22 (2229.2)	4
G100035008014	G150035008014	3.5	80	22 (2229.2)	4
G100035010014	G150035010014	3.5	100	20 (2026.5)	4
G100035012014	G150035012014	3.5	120	20 (2026.5)	4
G100040002014	G150040002014	4.0	20	22 (2229.2)	4
G100040004014	G150040004014	4.0	40	22 (2229.2)	4
G100040006014	G150040006014	4.0	60	22 (2229.2)	4
G100040008014	G150040008014	4.0	80	22 (2229.2)	4
G100040010014	G150040010014	4.0	100	20 (2026.5)	4
G100040012014	G150040012014	4.0	120	20 (2026.5)	4
G100050002014	G150050002014	5.0	20	20 (2026.5)	4
G100050004014	G150050004014	5.0	40	20 (2026.5)	4
G100050006014	G150050006014	5.0	60	20 (2026.5)	4
G100050008014	G150050008014	5.0	80	20 (2026.5)	4
G100050010014	G150050010014	5.0	100	18 (1823.9)	4
G100050012014	G150050012014	5.0	120	18 (1823.9)	4

## Application

The HP PTA Balloon Catheter is indicated for peripheral transluminal angioplasty (PTA) for peripheral vascular system (including the iliac artery, femoral artery, iliac femoral artery, popliteal artery and inferior genicular artery).